



**Save Our Vote  
Stand with Laura Pressley**

## Pressley's Election Results for the November General Election and the December Run Off Evaluation of the Top 9 Precincts that comprised over 80% of the Total Vote in District 4

### Top 9 Precincts with > 200 Votes, 80% of Voters

| Pct                                       | November 4th |             |             |              | Dec 16th    |             |             |              |
|---|--------------|-------------|-------------|--------------|-------------|-------------|-------------|--------------|
|   | LP           | Casar       | LP + GC     | LP%          | LP          | Casar       | Total       | LP%          |
| 156                                       | 188          | 517         | 705         | 27%          | 197         | 449         | 646         | 30%          |
| 222                                       | 275          | 354         | 629         | 44%          | 233         | 312         | 545         | 43%          |
| 135                                       | 128          | 498         | 626         | 20%          | 106         | 416         | 522         | 20%          |
| 139--HH                                   | 251          | 259         | 510         | 49%          | 198         | 229         | 427         | 46%          |
| 217                                       | 176          | 259         | 435         | 40%          | 151         | 219         | 370         | 41%          |
| 149--Ave G                                | 80           | 306         | 386         | 21%          | 76          | 279         | 355         | 21%          |
| 140                                       | 240          | 181         | 421         | 57%          | 187         | 169         | 356         | 53%          |
| 164                                       | 82           | 157         | 239         | 34%          | 62          | 122         | 184         | 34%          |
| 133                                       | 69           | 223         | 292         | 24%          | 65          | 173         | 238         | 27%          |
| <b>Election Overall Results</b>           | <b>1489</b>  | <b>2754</b> | <b>4243</b> | <b>35.1%</b> | <b>1275</b> | <b>2368</b> | <b>3643</b> | <b>35.0%</b> |
| <b>Average of Top 9 Pcts (unweighted)</b> |              |             |             | <b>35.1%</b> |             |             |             | <b>35.1%</b> |

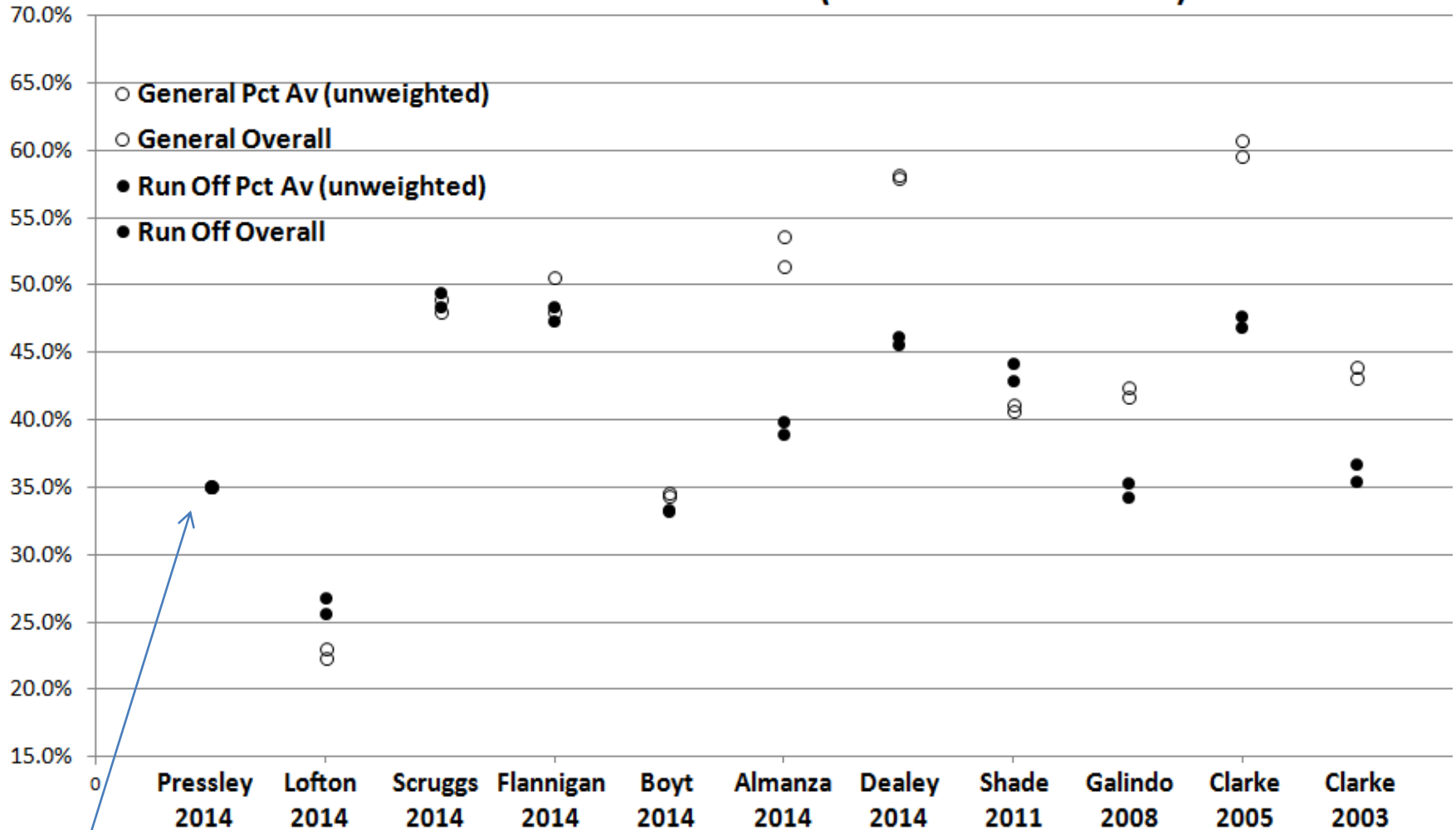
**Election Overall Results** refer to the total number of votes Pressley received divided by total Votes (Casar + Pressley)

**Average of unweighted precincts** refers to taking the average of the Pressley's Precinct results.

The **Election Results** and **Average of unweighted precincts** have no natural reason to correlate and they are virtually equal.

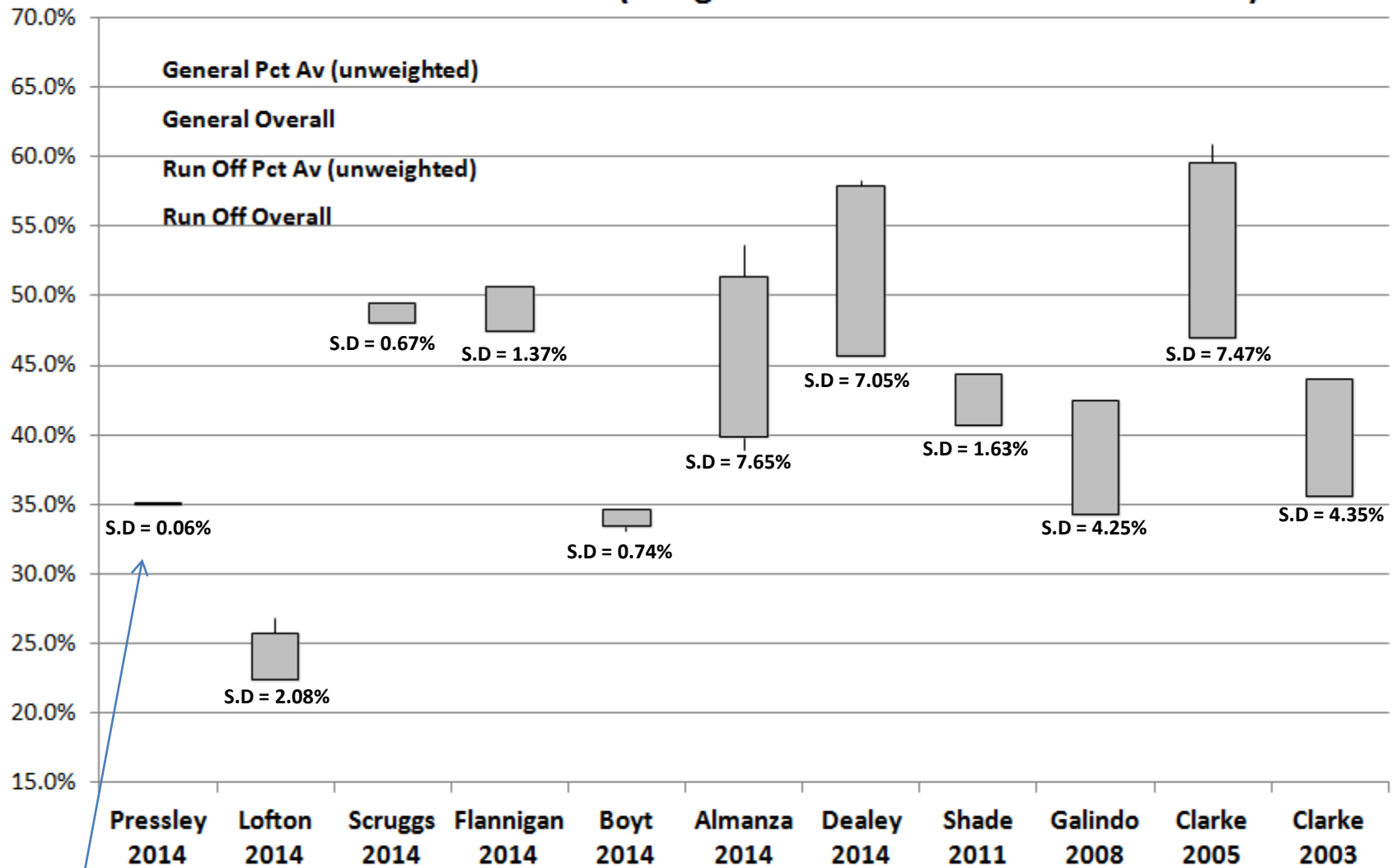
The next slides show a comparison of these values for other City Council Candidates vs Pressley's.

## Comparison of Election Returns for all Austin City Council Run Off Races General Election vs Run Off (Individual Data Points)

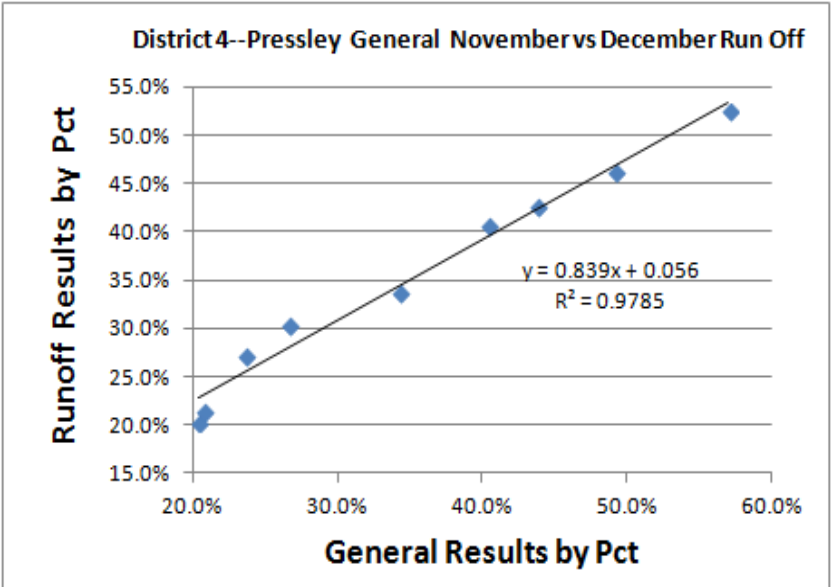
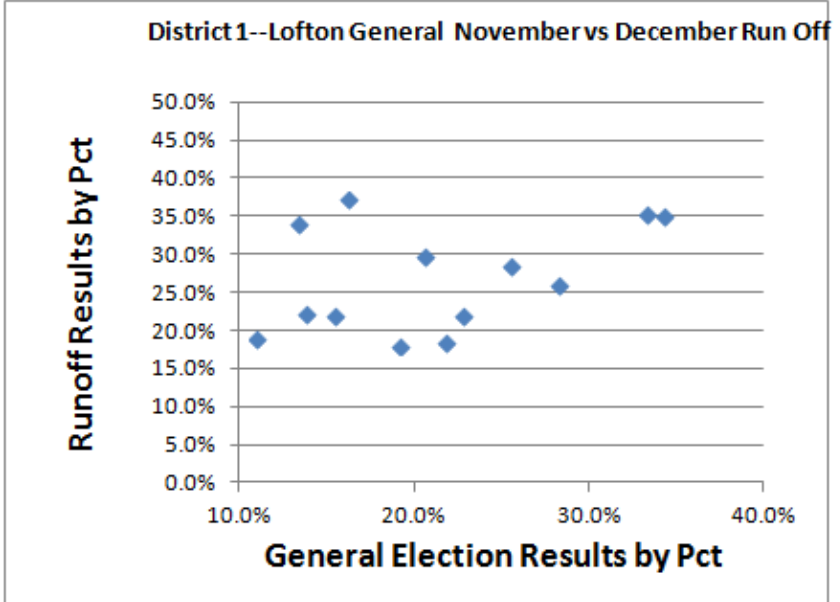
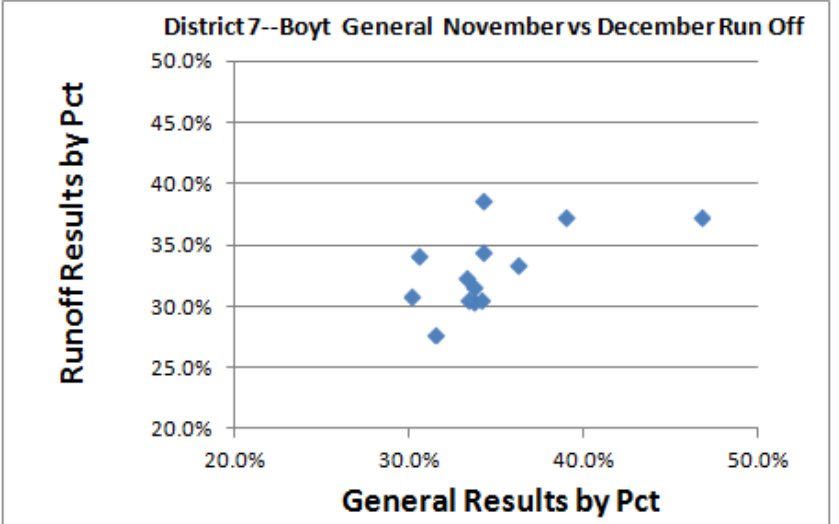
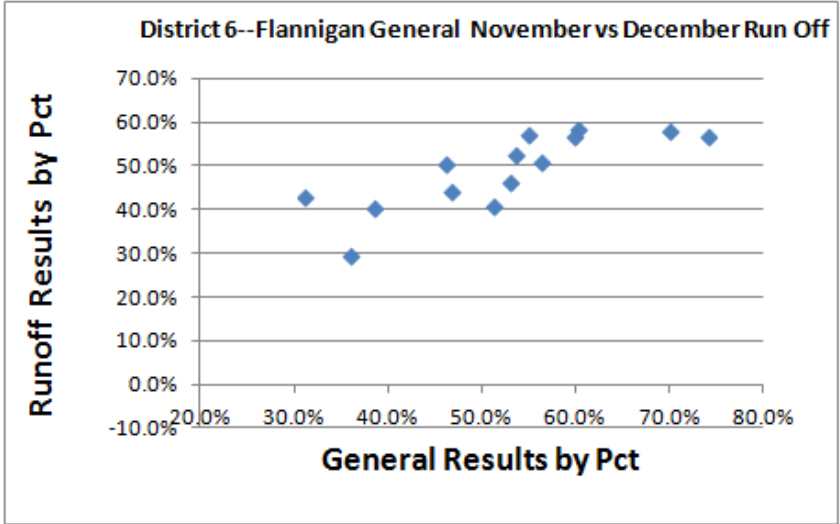


Pressley's results for the General and Run Off races are virtually equal (all four data points on top of each other). Comparing results for other council races, for precincts that comprise 80% or more of voters, no other Council race shows results to be identical .

## Comparison of Election Returns for all Austin City Council Run Off Races General Election vs Run Off (Range and Standard Deviation Shown)



Pressley's standard deviation (0.06%) for General and Run Off are outside the distribution of other Council races. The race with the next tightest distribution is 10x higher at a standard deviation of 0.67 (Scruggs). The race with the largest distribution is over 100X higher at 7.65% (Almanza).



**Pressley's election results show a high correlation that is not present in other candidates' races.**