

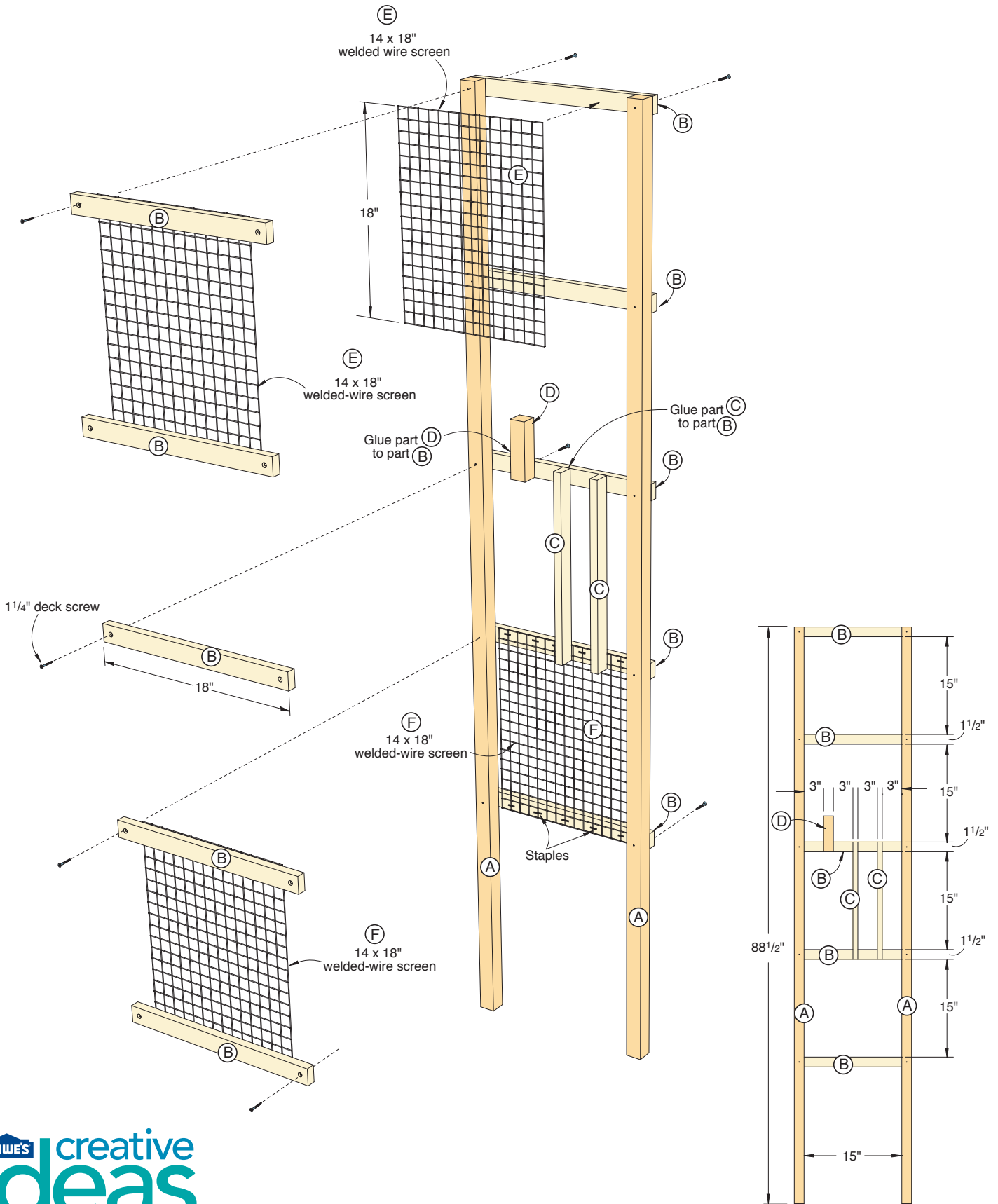
# DOUBLE-TRELLIS

## MATERIALS LIST

Part	FINISHED SIZE			Material	Pcs
	T	W	L		
A posts	1 1/2"	1 1/2"	88 1/2"	T	2
B rails	3/4"	1 1/2"	18"	T	10
C center slats	3/4"	1 1/2"	18"	T	2
D connector post	1 1/2"	1 1/2"	5 1/2"	T	1
E upper screen		14"	18"	WW	2
F lower screen		14"	18"	WW	2
G posts	1 1/2"	1 1/2"	68"	T	2
H long rails	3/4"	1 1/2"	36"	T	4
I lower rails	3/4"	1 1/2"	18"	T	6
J upper slats	3/4"	1 1/2"	10"	T	3
K lower slats	3/4"	1 1/2"	18"	T	3
L upper end slat	1 1/2"	1 1/2"	10"	T	1
M upper screen		10"	16"	WW	2
N lower screen		14"	18"	WW	2
Materials Key: T-treated, WW-welded wire screen					

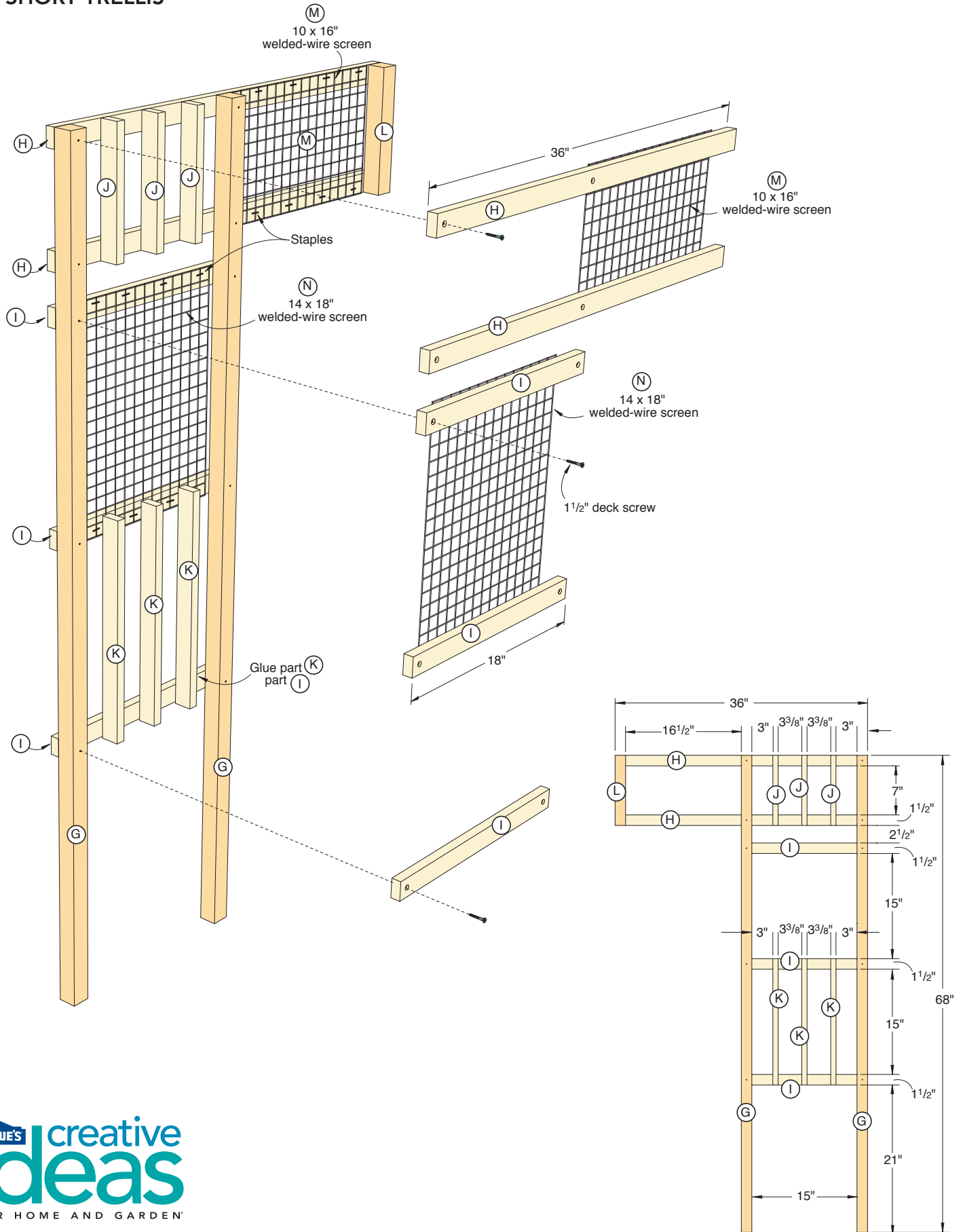
# DOUBLE-TRELLIS PROJECT DIAGRAM

## TALL TRELLIS



# DOUBLE-TRELLIS PROJECT DIAGRAM

## SHORT TRELLIS



# DOUBLE-TRELLIS PROJECT DIAGRAM

## CONNECTING TRELLISES

